

PART OF THE NE. 1/4, OF SECTION 27, T.5N., R.1W., S.L.B. & M.

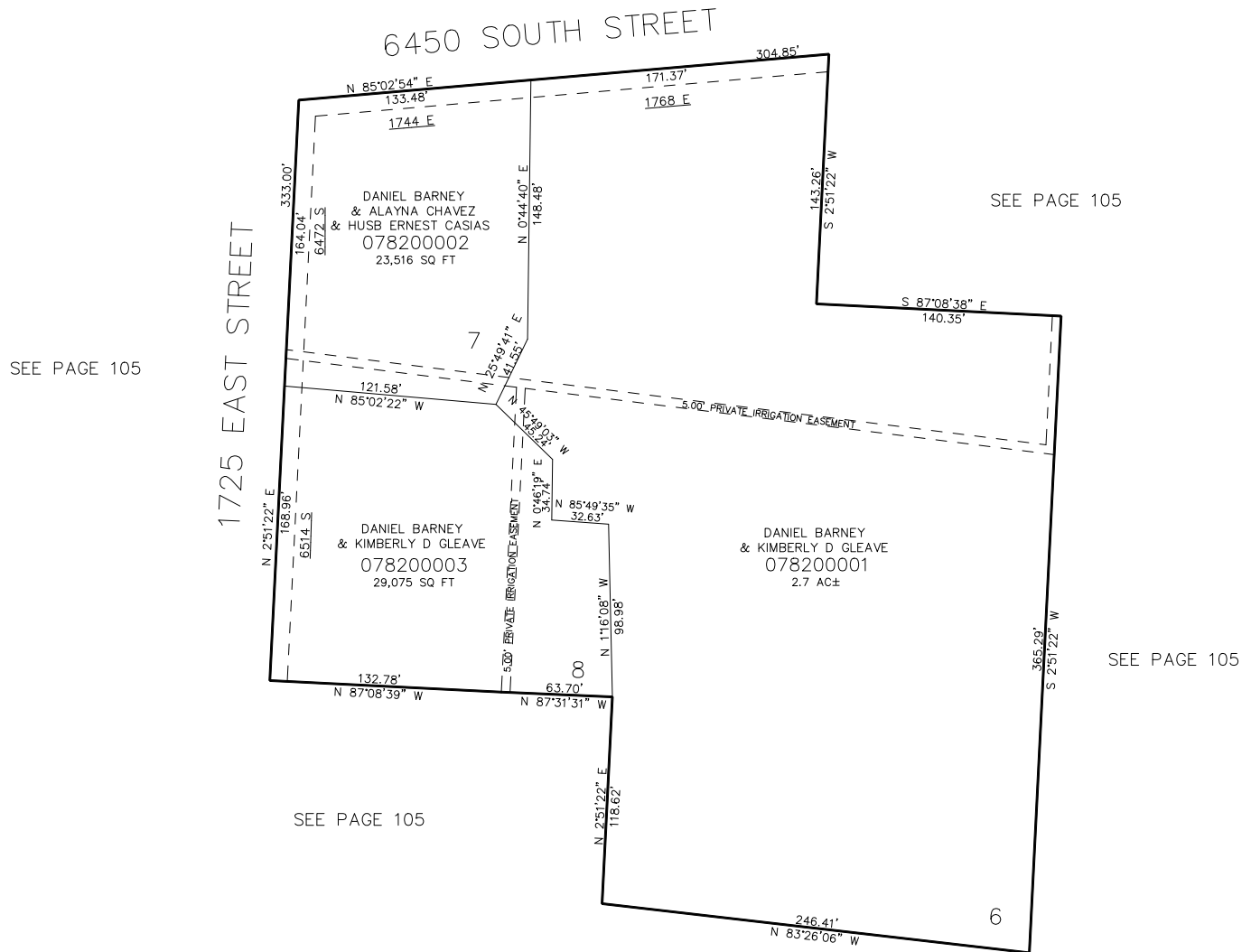
820

# GLEAVE SUBDIVISION 1ST AMENDMENT

IN UTAH CITY

SCALE 1" = 50'

TAXING UNIT: 55



10' UTILITY & DRAINAGE EASEMENTS EACH  
SIDE OF PROPERTY LINES AS INDICATED  
BY DASHED LINES EXCEPT AS OTHERWISE  
SHOWN.

FOR COMPLETE SURVEY DATA SEE  
ORIGINAL DEDICATION PLAT IN  
BOOK 92, PAGE 97 OF RECORDS.